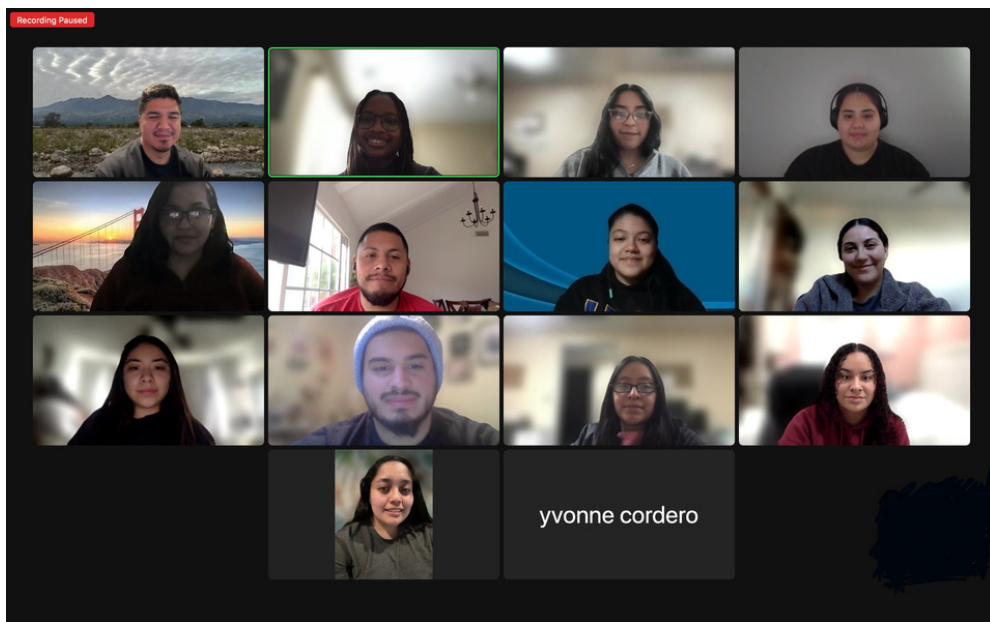


CHW ACADEMY NEWSLETTER

CHARLES R. DREW UNIVERSITY OF MEDICINE & SCIENCE



An image of our fifth Cohort of trainees for the Community Health Worker Academy. From left to right: Gabriel Cardenas (Program Coordinator), Sydni Brown (Master Trainer), Odalys Diaz, Evelyn Varela, Jacqueline Padilla, Christopher Mendoza, Mariam Bonfil, Elena Duenas, Emelin Sanchez, Michael Rodriguez, Ana Ajtum, Xanthe Dominguez, Brenda Franco, and Yvonne Cordero

Letter from the Editors

Welcome to the first edition of the CDU CHW Academy Newsletter of 2024! Here is an overview of what to find in this edition of the newsletter:

- **Welcoming a New Member to the Academy**
 - We are happy to share that our Academy continues to grow in numbers. Over the past few months, we have welcomed a new member, our new Program Coordinator, Gabriel Cardenas, Visit **Page 2** to get to know him and the experience he brings to the Academy.
- **New Developments in the CHW Worker Field**
 - In an article recently published by the California Health Care Foundation, we can see that Community Health Workers are continuing to be recognized as a groundbreaking workforce within healthcare settings! Check out **Page 4** to read about how CHWs are beginning to become integrated in programs at a statewide level!
- **Exciting Community Health Work Opportunities**
 - With the recognition of Community Health Work becoming a pivotal workforce in healthcare settings, we see many exciting opportunities coming about in the Los Angeles area. **Page 5** includes links where you can apply to CHW jobs, join a Community Health Worker network, or find volunteer opportunities near you!

Newsletter Highlights

Letter from the Editors

Page 2: Welcome to the Team!

Page 3: Clinical Sites of Cohort 5

Page 4: Community Health Worker Field Updates

Page 5: Community Health Worker Opportunities

Page 7: Stay Connected!

Welcome to the Team!

We want to introduce you to one of our new members of the CHW Academy: our new Program Coordinator!

Program Coordinator: Gabriel Cardenas

Gabriel is originally from Ventura County California. Gabriel Studied Sociology, Art, and Education at UC Santa Barbara and received his master's in Chicana/o Studies from CSU Northridge. Gabriel's research centers on farmworkers and Spanish-speaking working class communities. His work highlights and criticizes negative socioeconomic and health outcomes experienced by disenfranchised people of color. He also uses visual art to educate others across the country and the globe.



Gabriel has worked in Education, the mental health field, and the community/public health field. Gabriel teaches at CSU Northridge and has experience working as a CHW and a CHW coordinator with Los Angeles county. Gabriel is currently our program coordinator of the CDU CHWA program.

Gabriel enjoys an active lifestyle, playing soccer and cycling. He likes to paint murals and connect with other artists and musicians. He believes that all people deserve access to healthy and livable communities that promote personal and long term development of its residents. Gabriel is grateful to continue promoting positive public health in our communities and advancing the impact of CHWs in the field.

We are incredibly excited to have Gabriel join our team. We believe someone with his extensive background and knowledge truly makes a wonderful fit for our Academy.

Welcome to the Academy, Gabriel!

Clinical Sites of Cohort 5

The Academy is pleased to present the 7 internship sites of Cohort 5! Thanks to the help of our clinical partnership with Providence, the Academy has now expanded our internship sites to South Central Los Angeles. Click below to learn more of these integral organizations where our interns practice and advance their roles and skills that are essential to Community Health Work!

BEHAVIORAL HEALTH SERVICES, INC.

Number of interns placed: 2



SAN FERNANDO COMMUNITY HEALTH CENTER

SAN FERNANDO COMMUNITY HEALTH CENTER

Number of interns placed: 1

PROVIDENCE LITTLE COMPANY OF MARY - SAN PEDRO AND TORRANCE

Number of interns placed: 3



DIGNITY HEALTH - NORTHRIDGE

Number of interns placed: 2

SOUTHSIDE COALITION OF COMMUNITY HEALTH CENTERS

Number of interns placed: 2



WATTS HEALTHCARE CORPORATION

Number of interns placed: 2

WILMINGTON COMMUNITY CLINIC

Number of interns placed: 1



Community Health Worker Field Updates

CHWS GAIN RECOGNITION AT A STATEWIDE LEVEL IN CALIFORNIA

In the an article published by the California Health Care Foundation, titled “Community Health Workers Gain Recognition in California”, Robin Buller discusses the growing recognition of community health workers (CHWs) in California. It highlights the pivotal role played by CHWs in bridging gaps between communities and healthcare systems, especially in underserved areas. The state's acknowledgment of CHWs as essential healthcare team members is seen as a positive step, emphasizing their contributions to improving health outcomes and reducing health disparities. The article also mentions the potential impact on workforce development and the need for continued support and integration of CHWs into the healthcare system to enhance community health amongst all populations.

The article also addresses past challenges that health care organizations have run into when attempting to integrate CHWs into clinical settings, such as certification requirements and fair reimbursement rates, and the need for technical assistance to navigate services such as Medi-Cal. Ultimately, it is important for the voices of CHWs to be amplified when “identifying opportunities for growth and improvement that will be felt on the ground.”

The CDU CHW Academy is excited to see the recognition of contributions that CHWs bring to the healthcare system on a statewide level. This article relates to the work we do here at the Academy, as it addresses many of the reasons why the Academy was developed and how the work we do greatly contributes to the development of this emerging workforce. To read more about this article in detail, [Click Here](#).

THE NATIONAL CHW COMMON INDICATORS (CI) PROJECT.

In other exciting updates, we would like to bring attention to a new tool that can be used to support CHW integration and sustainability in health care organizations, titled the “National CHW Common Indicators (CI) Project”. The CHW Center for Research and Evaluation has identified 12 vital indicators which “will contribute to the goal of building CHW infrastructure to sustain and finance the CHW workforce”. Some of these indicators include CHW compensation, CHW involvement in policy-making, and different ways community members benefit from the support of a CHW.

This tool is pivotal for the CHW workforce, as organizations and programs can identify ways to improve their inclusion and support of CHWs on their teams. To learn more about the processes in how these indicators were identified and how organizations can apply them, click [here](#).

Community Health Worker Opportunities

Career & Other Engagement Opportunities as of February 2024

Job Title: Full Time Community Health Worker at Children's Hospital Los Angeles

[Click here to learn more and apply!](#)

Job Title: Senior Community Health Worker at Providence Health & Services, Pacoima

[Click here to learn more and apply!](#)

Opportunity: Join Vision y Compromiso, a CHW network!

[Click here to join!](#)

Opportunity Title: Join the California Association of Community Health Workers!

[Click here to join!](#)

Job Title: Community Health Worker/Promotora at Gracelight Community Health, Los Angeles

[Click here to learn more and apply!](#)

Civic Engagement Opportunity: Volunteer with Dignity Health, one of our clinical partners!

[Click here to learn more!](#)

Job Title: Care Coordinator—Community Health Worker at April Parker Foundation, Long Beach

[Click here!](#)

Job Title: Community Health Worker Onsite, Per Diem, Cedars-Senai Medical Center

[Click here to learn more and apply!](#)

Volunteer Opportunity: Volunteer for LA Health Volunteers!

[Click here to learn more and apply!](#)

Stay Connected!

Explore our
online
community!



[Join us on Facebook!](#)

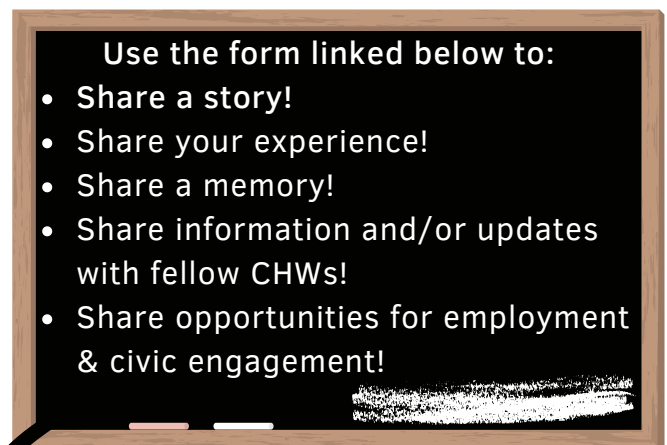


CDU.COMMUNITYHEALTHWORK

[Join us on Instagram!](#)

Your Feedback
Matters!

Contribute to the
Newsletter!



This newsletter was made possible thanks to grant #BD-0002496 from Cedars-Sinai, awarded to Charles R. Drew University of Medicine and Science for the Community Health Worker Academy.